



User manual

Contents

For your safety	5
Who is this product suitable for?	5
How is this product used?	5
What should you avoid?	5
Misuse	5
General safety notes	6
Overview of the alert levels and symbols in these instructions	8
Overview of symbols on the product.....	8
Getting to know your device.....	9
About Geberit AquaClean devices.....	9
Functional overview.....	9
The device at a glance.....	10
Operating concept.....	12
About the operating concept.....	12
Front side of the remote control.....	12
Rear side of the remote control.....	13
Lateral control panel	13
Switching on the device.....	14
Switching off the device	15
How to use the device.....	16
Getting started.....	16
Duration of the shower procedure.....	16
Using the anal shower.....	17
Switching the oscillating motion of the anal shower on and off.....	17
Using the Lady shower	18
Using the dryer	18
Adjusting the shower procedure to your personal needs	19
Setting the spray intensity	19
Setting the spray arm position	19
Quick saving user profiles.....	20
What happens after I use it?.....	20
How to program the device	21
Overview of the programming options	21
Changing basic settings	21
Creating a user profile	24
Cleaning and descaling the device	26
Cleaning coated WC ceramic appliances	26
Caring for and cleaning smooth surfaces.....	26
Automatic water replacement.....	26
General cleaning recommendations.....	26
Targeted disinfection.....	27
Suitable cleaning agents and cleaning equipment.....	27
Care and maintenance main menu	29

Descaling the device	32
Cleaning the flushing area of the WC ceramic appliance	34
Cleaning the WC lid and housing	34
Cleaning the WC seat.....	35
Cleaning the dryer arm and spray nozzle	36
Replacing the ceramic honeycomb filter	38
Troubleshooting	40
Status LED on the lateral control panel.....	40
Device descaling message.....	40
The shower toilet is not functioning	41
Other functional errors.....	42
The remote control is not functioning	43
Replacing the remote control battery	45
Re-assigning the remote control.....	45
Sustainability	46
Geberit Group and sustainability	46
Ecodesign – ecobalance.....	46
Tips for reducing the ecological footprint	46
Disposal	47
Disposal of old electrical and electronic equipment	47
Constituents.....	47
End user warranty	48
End user warranty.....	48
Technical data and conformity	49
Technical data.....	49
Declaration of conformity	49

For your safety

Who is this product suitable for?

As a functioning toilet, the Geberit AquaClean shower toilet is suitable for all age groups. However, children must not carry out cleaning or maintenance work without supervision.

How is this product used?

The product is suitable for the following application purposes and areas of use:

- as a shower toilet:
 - for cleaning the anal area
 - for cleaning the outer vaginal area
 - for odour extraction
- for installation in heated indoor areas
- for connection to the drinking water system
- for operation with water from reverse osmosis systems

What should you avoid?

The product must be used as intended. Do not:

- leave the WC seat during the shower procedure
- place loads or objects on the WC lid
- immerse the remote control in liquid
- operate without plug for Geberit AquaClean descaling agent


Misuse


Geberit accepts no liability for the consequences arising from misuse.

General safety notes

The following safety notes apply for the entire duration of the product's life cycle:

- Read the user manual before the first use of the product to familiarise yourself with the use of the product.
- Store the user manual for future reference.
- Do not stand on the WC lid or the WC seat.
- If damaged, do not continue to use the device. If possible, isolate the device from the supply system and contact Geberit customer service.
- Do not open the device. It does not contain any components for the user to service or repair.
- Do not perform any changes or additional installations. Modifying the device runs the risk of fatal danger.
- Repairs may only be carried out by authorised skilled persons using original spare parts.
- Only original accessories may be used.
- Operation and maintenance work may only be performed by the operator or user as described in this user manual.
- Always use the current version of the installation manual for installing the device if the Geberit AquaClean has been removed (e.g. if you move house).
- The Geberit AquaClean must only be connected to a mains voltage conforming to the specification plate.
- Observe the manufacturer information at all times regarding the use of cleaning and descaling agents.

 This document contains warning notes at various points. Warning notes are usage and situation-specific safety notes. They provide warnings on specific hazards.

 These instructions correspond to the state of the device technology at the time of printing. Geberit reserves the right to make changes in terms of further development.

A current version of this and other documents is available online. → www.geberit.com

Overview of the alert levels and symbols in these instructions

Alert levels and symbols



DANGER

Indicates a hazard which, if not avoided, can lead to death or serious injury.



ATTENTION

Indicates a hazard which, if not avoided, can lead to material damage.



Refers to important information.

Overview of symbols on the product

Symbol	Meaning
	Read the safety notes and operating instructions/operation manual before commissioning the product.
	Danger of fatal electric shock

Getting to know your device

About Geberit AquaClean devices

The Geberit AquaClean device is a WC with integrated shower function. The device fulfils all the functions of a conventional toilet. Additional functions are subject to the design of your product.

Functional overview

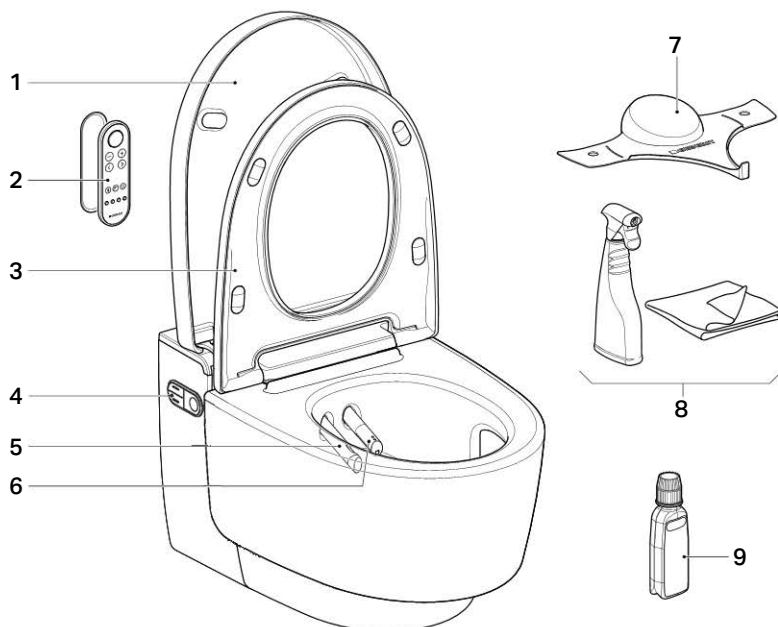
Hygiene functions:

- TurboFlush technology
- odour extraction in the WC ceramic appliance
- WhirlSpray shower technology with individual spray arm position
- spray arm with oscillating motion
- extendible Lady shower nozzle integrated into the spray nozzle with individual spray arm position
- automatic shower arm cleaning before and after each shower procedure
- dryer functionality via dryer arm
- descaling programme

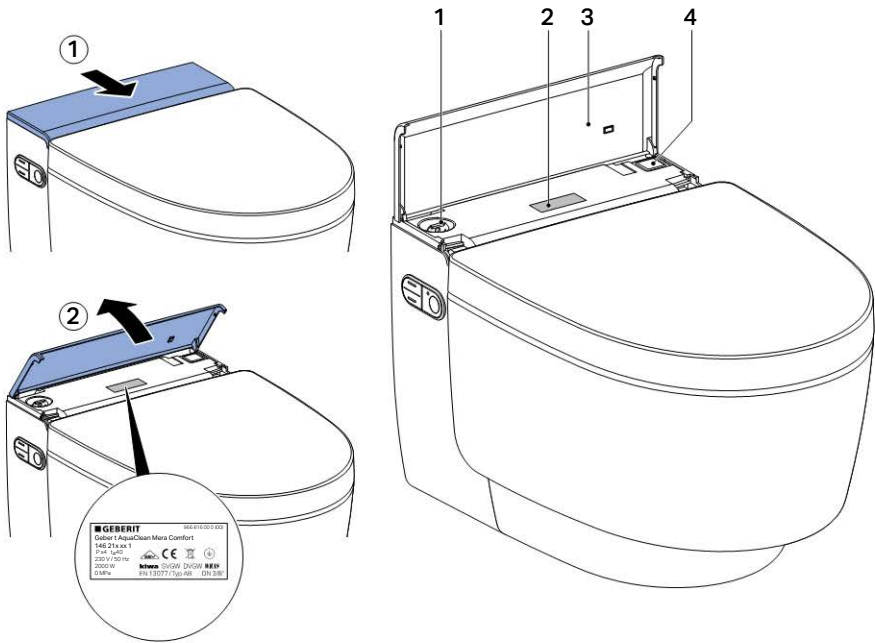
Comfort functions:

- when you approach it:
 - The WC lid opens and closes by means of a proximity sensor.
 - The orientation light switches on when you approach it.
 - The shower water heats up.
 - The WC seat heats up.
- spray intensity can be selected
- WC seat with SoftClosing
- remote control with LCD display
- all functions can be operated via remote control
- four individual user profiles can be stored
- shower toilet functions can be operated via a lateral ergonomic control panel

The device at a glance



- 1 WC lid
- 2 Remote control with magnetic wall-mounted holder
- 3 WC seat with WC seat heating and QuickRelease function
- 4 Lateral control panel with status LED
- 5 Dryer arm with dryer nozzle
- 6 Spray arm with spray nozzle and Lady shower nozzle
- 7 Spray shield
- 8 Geberit AquaClean Cleaning set (art. no. 242.547.00.1)
- 9 Geberit AquaClean Descaling agent (art. no. 147.040.00.1)



- 1 Filling opening with plug for Geberit AquaClean descaling agent
- 2 Specification plate with serial number
- 3 Design cover with magnet
- 4 Power switch

Operating concept

About the operating concept

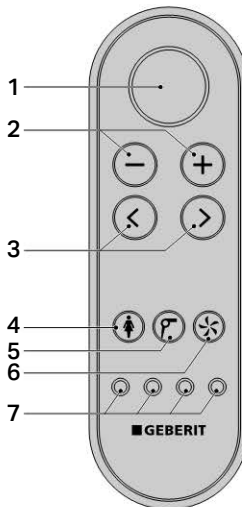
The device can be operated via remote control and the lateral control panel.

i The remote control has a battery life of several years. The battery can be replaced if the remote control fails.

i Should the remote control fail to function, you can use the lateral control panel instead.

Front side of the remote control

All functions for daily use can be operated from the front side of the remote control.



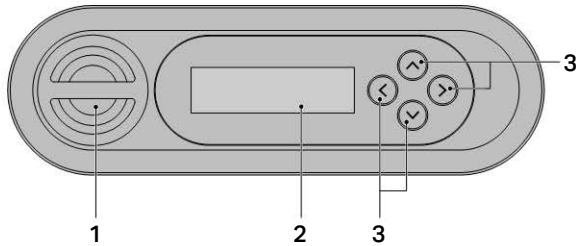
- 1 <Shower> button: start and stop the spray functionality / lift or lower the WC lid / stop the dryer functionality and the Lady shower
- 2 <->/<+> buttons: decrease or increase the spray intensity
- 3 <left>/<right> arrow keys: set the spray arm position
- 4 <Lady shower> button: start and stop the Lady shower
- 5 <Dryer> button: start and stop the dryer
- 6 <Odour extraction> button: start and stop odour extraction
- 7 <User profile> buttons: select the user profiles 1–4

Four different user profiles can be stored via the user profile buttons on the remote control.

i User profiles allow you to access your personal settings directly. Select your user profile as soon as you sit down.

Rear side of the remote control

You can access system settings and additional functions from the rear side of the remote control.



- 1 Battery compartment
- 2 LCD display
- 3 <up>/<down>, <left>/<right> arrow keys



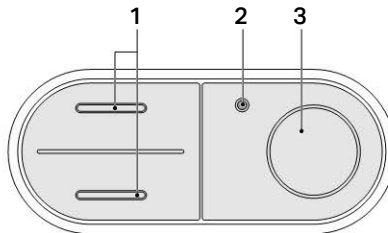
The remote control has a battery life of several years. The battery can be replaced if the remote control fails.



Should the remote control fail to function, you can use the lateral control panel instead.

Lateral control panel

The shower toilet functions of the device can be operated from the lateral control panel.



- 1 <up>/<down> buttons: decrease or increase the spray intensity
- 2 Status LED
- 3 <Shower> button: start or stop the anal shower or the Lady shower

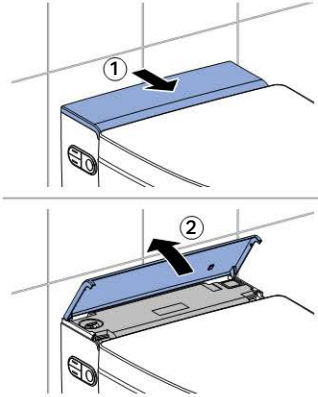


The buttons of the control panel are designed ergonomically. Each button has an individual, tangible surface form.

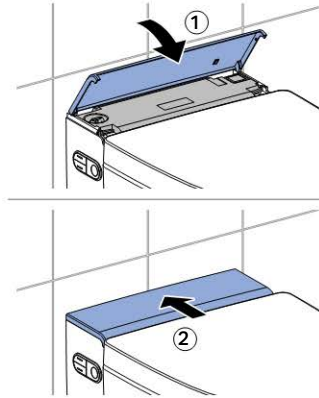
Switching on the device

i A minimum of 30 seconds must be allowed between the switch-on procedure and the switch-off procedure in order for the electronics to be able to discharge completely.

1 Open the design cover.



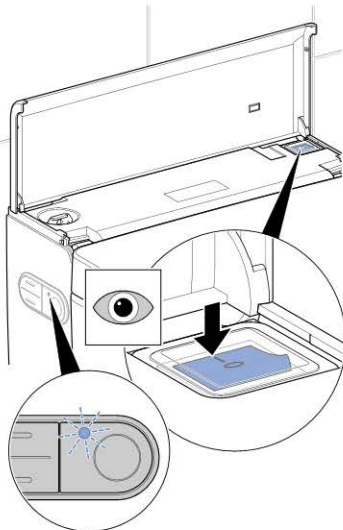
3 Close the design cover.



Result

✓ The device initialises again after switching on.

2 Press the power switch.



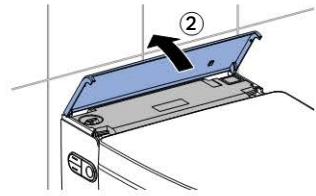
Switching off the device

i A minimum of 30 seconds must be allowed between the switch-on procedure and the switch-off procedure in order for the electronics to be able to discharge completely.

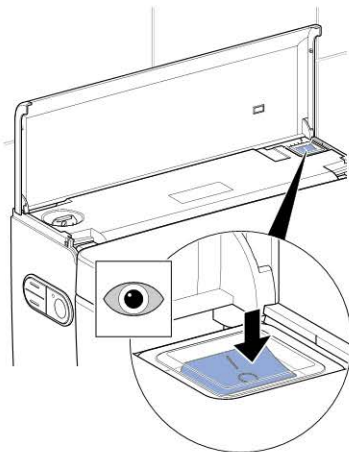
1 Close the WC lid.



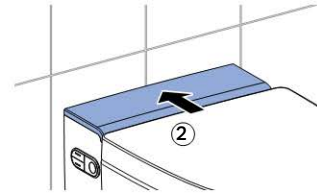
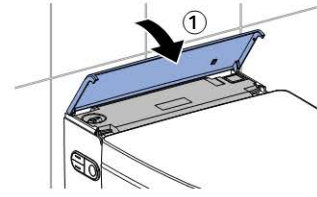
2 Open the design cover.



3 Press the power switch.



4 Close the design cover.



How to use the device

Getting started



If a user is detected, the basic settings are activated automatically.

→ see "Changing basic settings", page 21

However, during the shower procedure, you can adjust the shower procedure to your personal needs.

When you enter the detection range of the proximity sensor,

- the orientation light activates.
- the WC lid opens.
- the WC seat heats up.

When you leave the detection range, the WC lid closes automatically after a time.

The device is fitted with a user recognition unit that detects when the WC seat is under load.

When you sit down on the WC seat,

- the device enables the spray functionality.
- the odour extraction unit starts.

When you get up from the WC seat,

- the spray functionality deactivates.
- the dryer functionality deactivates.

Duration of the shower procedure

The spray time is more than 30 seconds. It depends largely on the spray intensity and the defined shower water temperature.



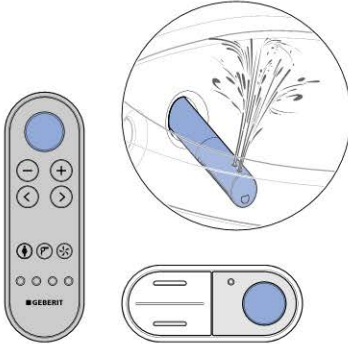
After a complete shower cycle, the device will require around 2 minutes to re-heat the water in the storage water heater. During this time, hot water will only be available from the rear spray nozzle.

Using the anal shower

Prerequisite

- You are sitting down on the WC seat.

- ▶ Briefly press the <Shower> button on the lateral control panel or on the remote control once.



Result

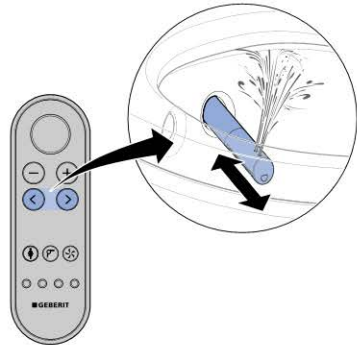
- ✓ The shower procedure starts with the oscillating motion.

- i** You can stop the shower procedure early by pressing the <Shower> button once again.

Switching the oscillating motion of the anal shower on and off

- i** The oscillating motion of the spray arm increases the cleaning effect.

- ▶ The oscillating motion can be switched on and off by pressing the <left> and <right> arrow keys at the same time.



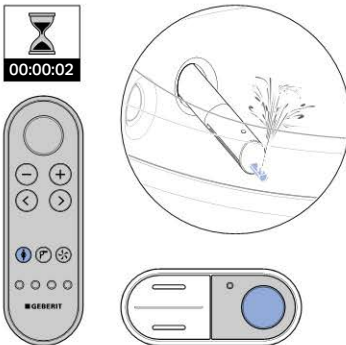
Using the Lady shower

i The woman's intimate area is a very sensitive zone and requires special and prudent care. The Lady shower must be set to your ergonomic conditions to achieve an optimal cleaning result. The position of the spray nozzle and the spray intensity must be selected so that the shower spray cannot penetrate the vagina.

Prerequisite

– You are sitting down on the WC seat.

- ▶ Press the <Lady shower> button on the remote control. Or: press the <Shower> button on the lateral control panel for 2 seconds.



Result

✓ The shower procedure starts.

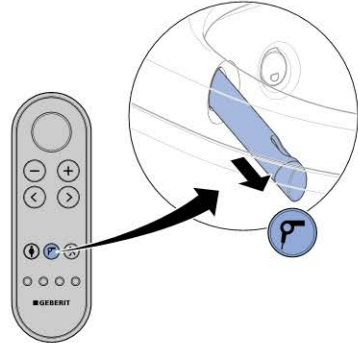
i You can stop the shower procedure early by pressing the <Lady shower> button once again.

Using the dryer

Prerequisite

– You have ended the shower procedure.

- ▶ Press the <Dryer> button on the remote control.



Result

✓ The drying procedure starts.

i You can stop the drying procedure early by pressing the <Dryer> button once again.

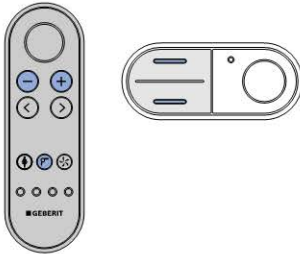
Adjusting the shower procedure to your personal needs

Setting the spray intensity

Prerequisite

- The shower procedure is running.

- ▶ Press the <up> button or the <+> button to increase the spray intensity. Press the <down> button or the <-> button to decrease the spray intensity.



Result

- ✓ The shower spray becomes stronger/weaker.

- i** You can set the spray intensity in 5 stages.

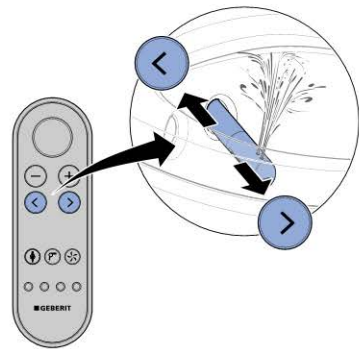
Setting the spray arm position

- i** Female users should set the spray arm position of the spray functionality to their ergonomic conditions so that it does not compromise the natural protection of the vaginal area.

Prerequisite

- The shower procedure is running.

- ▶ Press the arrow keys on the remote control to position the spray arm.



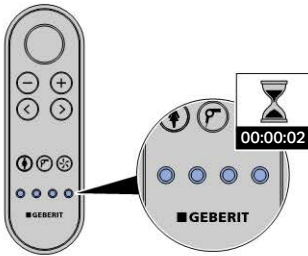
Result

- ✓ The spray arm is optimally positioned.

- i** You can set the spray arm position in 5 stages.

Quick saving user profiles

- ▶ Press one of the 4 user profile buttons for more than 2 seconds to save the current settings.



The following functions can only be configured from the rear side of the remote control:

- WC seat heating
- shower water temperature
- warm air temperature

→ "Creating a user profile",
page 24

What happens after I use it?

After use, the device automatically prepares for the next use:

- The spray nozzle and Lady shower nozzle are rinsed thoroughly.
- The WC lid closes automatically after a while.
- The device is set to economy mode.



If the WC seat is up, it will be closed automatically by the WC lid.

How to program the device

Overview of the programming options

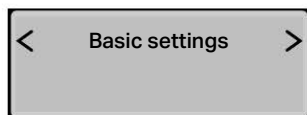
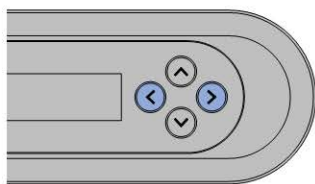
The system settings can be configured from the rear side of the remote control. The following main menus are available:

- [Basic settings]
- [Profile settings]
- [Care and maintenance]

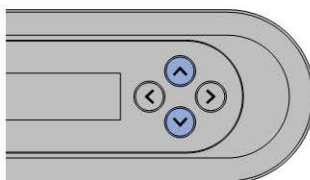
- i**
- Press any button on the rear side of the remote control to activate the display. The display is automatically deactivated after 30 seconds to save battery life.
 - Pressing the <up> arrow key for more than 2 seconds returns the display to the [Basic settings] menu.

Changing basic settings

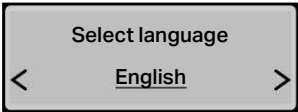
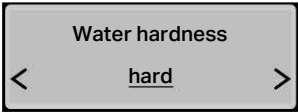
- 1** Launch the [Basic settings] main menu using the <left>/<right> arrow keys on the rear side of the remote control.

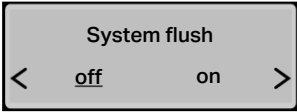
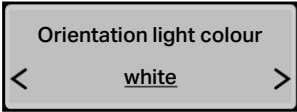
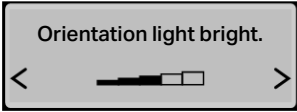
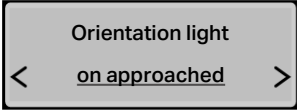
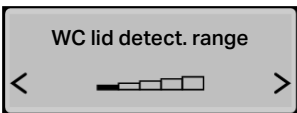
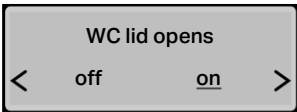
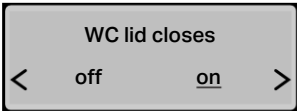
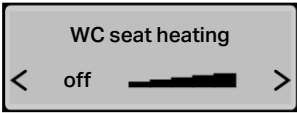
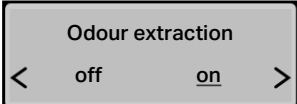


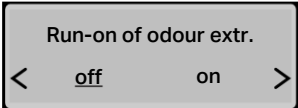
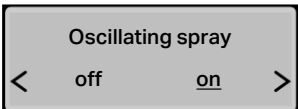
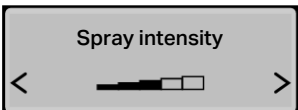
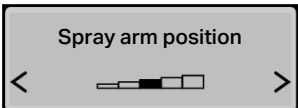
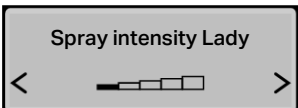
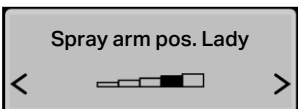
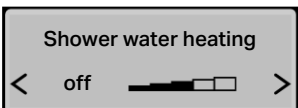
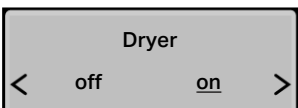
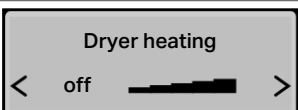
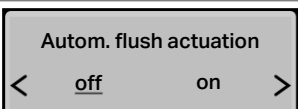
- 2** Use the <up>/<down> arrow keys to access the next menu item.



- i** To save the modified settings, the menu must be run through in its entirety until the main menu appears once again on the display.

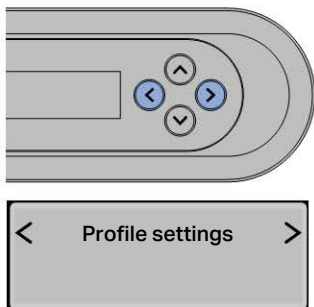
Shown on display	Note
	Select the language of the display
	Adaptable hardness value: hard/medium/soft → see "Device descaling message", page 40

Shown on display	Note
 <p>System flush < <u>off</u> on ></p>	<p>[on] = The system flush starts as soon as a user is detected on the WC. [off] = The system flush starts before the shower procedure as soon as the <Shower> button is pushed. If the system flush is switched off, then the flush time before the end of the shower procedure is approx. 15 seconds.</p>
 <p>Orientation light colour < <u>white</u> ></p>	<p>Orientation light colours: white/blue/turquoise/magenta/orange/yellow/warm white</p>
 <p>Orientation light bright. < [slider] ></p>	<p>Adjusting the brightness setting of the orientation light</p>
 <p>Orientation light < <u>on approached</u> ></p>	<p>[on] = The orientation light stays on permanently. [off] = The orientation light is deactivated. [on approach] = The orientation light switches on automatically as soon as a user is detected. [in the dark] = The orientation light switches on as soon as a user is detected when ambient brightness is low.</p>
 <p>WC lid detect. range < [slider] ></p>	<p>Sensor range of the lid lifter</p>
 <p>WC lid opens < off <u>on</u> ></p>	<p>[on] = The WC lid opens automatically. [off] = The WC lid does not open automatically.</p>
 <p>WC lid closes < off <u>on</u> ></p>	<p>[on] = The WC lid closes automatically. [off] = The WC lid does not close automatically.</p>
 <p>WC seat heating < off [slider] ></p>	<p>Temperature setting of the WC seat heating</p>
 <p>Odour extraction < off <u>on</u> ></p>	<p>[on] = The odour extraction unit starts as soon as a user is detected on the toilet. [off] = The odour extraction unit is deactivated.</p>

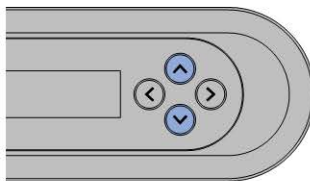
Shown on display	Note
	<p>[on] = The odour extraction unit continues running for 2 minutes afterwards. [off] = The odour extraction unit does not continue running afterwards.</p>
	<p>[on] = The oscillating motion of the spray arm is activated. [off] = The oscillating motion of the spray arm is deactivated.</p>
	<p>Spray intensity of the anal shower</p>
	<p>Spray arm position of the anal shower</p>
	<p>Spray intensity of the Lady shower</p>
	<p>Spray arm position of the Lady shower</p>
	<p>Temperature regulation of the shower water</p>
	<p>[on]= The dryer functionality starts automatically after the spray functionality. [off] = The dryer functionality is deactivated.</p>
	<p>Temperature regulation of the dryer</p>
	<p>This menu only appears if the optional interface module for the external flush actuation is installed.</p>

Creating a user profile

- 1 Launch the [Profile settings] main menu using the <left>/<right> arrow keys on the rear side of the remote control.

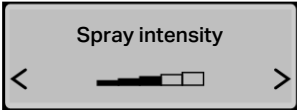
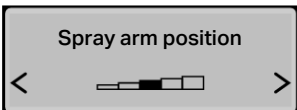
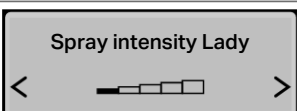
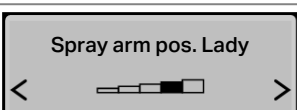
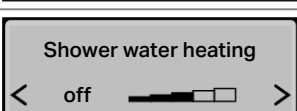
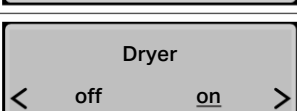
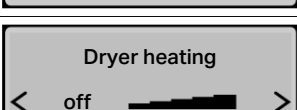


- 2 Use the <up>/<down> arrow keys to select the settings which you would like to change.



- i** To save the modified settings, the menu must be run through in its entirety until the main menu appears once again on the display.

Shown on display	Note
	Corresponds to the user profile buttons on the front side of the remote control
	<p>[on] = The system flush starts as soon as a user is detected on the WC.</p> <p>[off] = The system flush starts before the shower procedure as soon as the <Shower> button is pushed.</p> <p>If the system flush is switched off, then the flush time before the end of the shower procedure is approx. 15 seconds.</p>
	Temperature setting of the WC seat heating
	<p>[on]= The odour extraction starts as soon as a user is detected on the toilet.</p> <p>[off] = The odour extraction unit is deactivated.</p>
	<p>[on] = The oscillating motion of the spray arm is activated.</p> <p>[off] = The oscillating motion of the spray arm is deactivated.</p>

Shown on display	Note
	Spray intensity of the anal shower
	Spray arm position of the anal shower
	Spray intensity of the Lady shower
	Spray arm position of the Lady shower
	Temperature regulation of the shower water
	[on]= The dryer functionality starts automatically after the spray functionality. [off] = The dryer functionality is deactivated.
	Temperature regulation of the dryer


Cleaning and descaling the device

Cleaning coated WC ceramic appliances

The WC ceramic appliance has a special coating. This coating draws water drops together to form spheres which drip away very effectively. Residue such as limescale and dirt is taken up by the water drops and simply flushed away with them. This effect is very environmentally friendly, as no aggressive WC cleaning agents are required.

Caring for and cleaning smooth surfaces

All smooth surfaces can be cleaned hygienically with water and a mild, liquid cleaning agent that is kind to the skin.

 Aggressive and scouring cleaning agents can damage the surface. Only use mild, liquid cleaning agents that are kind to the skin. The Geberit AquaClean cleaning set (art. no. 242.547.00.1) includes a ready-made cleaning agent that is optimal for cleaning all Geberit AquaClean surfaces.

Automatic water replacement

If the shower toilet has not been used for more than 2 months, the device is rinsed with fresh water after it is switched on. This ensures optimum shower water quality before usage.

General cleaning recommendations

Cleaning interval	Cleaning activity
Daily	▶ Remove water drops with a soft, lint-free cloth to avoid limescale stains.
Weekly	▶ Clean all surfaces and corners thoroughly. → see "Cleaning the WC lid and housing", page 34 ▶ Test spray nozzle and clean if required. → see "Cleaning the dryer arm and spray nozzle", page 36 ▶ Rinse the spray nozzle under running water to remove foreign substances.
Monthly	▶ Clean the WC ceramic appliance with Geberit AquaClean cleaning agent. → see "Cleaning the flushing area of the WC ceramic appliance", page 34

Targeted disinfection

Disinfection is only recommended if there is a definite risk of infection as a result of germs.

ATTENTION

Surface damage caused by aggressive disinfectants

- ▶ Only use alcohol-based disinfectants that are also suitable for hand and skin disinfection.
- ▶ Observe the safety notes from the manufacturer when handling hazardous substances.

Type of disinfection	Disinfection procedure
Wet wipe disinfection For use on smooth surfaces that can be rubbed	<ul style="list-style-type: none">▶ Moisten all surfaces with disinfectant.▶ Allow the disinfectant to take effect according to the manufacturer information.▶ Then rub the surfaces with single-use towels.
Spray disinfection Only for use on surfaces that are not easily accessible and cannot be rubbed	<ul style="list-style-type: none">▶ Spray the difficult-to-reach surface with disinfectant until wet.▶ Allow the disinfectant to take effect according to the manufacturer information.

Suitable cleaning agents and cleaning equipment

ATTENTION

Damage to the device from aggressive descaling agents






- ▶ Only use Geberit AquaClean descaling agent in the device.




ATTENTION

Surface damage caused by aggressive and scouring cleaning agents

- ▶ Use Geberit AquaClean cleaning agent.

The Geberit AquaClean cleaning set includes a ready-made cleaning agent that is optimal for cleaning all Geberit AquaClean surfaces.

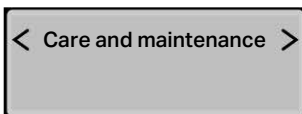
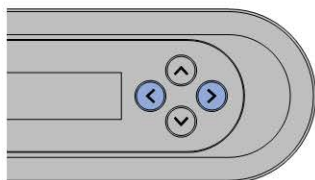
Symbol	Characteristics of suitable cleaning agents
	Skin-friendly
	Cleaning agents are permitted to have a low acid content, e.g. heavily diluted citric acid
	Low-foaming
	Liquid
	Water-dilutable

Symbol	Suitable cleaning equipment
	Soft, fine-pored sponges
	Lint-free, soft cloths which are free of dust
	Toilet brush

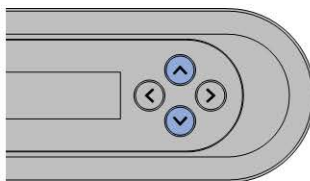
Care and maintenance main menu

- i** Press any button on the rear side of the remote control to activate the display. The display is automatically deactivated after 30 seconds to save battery life.
- Pressing the <up> arrow key for more than 2 seconds returns the display to the [Basic settings] menu.

- Launch the [Care and maintenance] main menu using the <left>/<right> arrow keys on the rear side of the remote control.



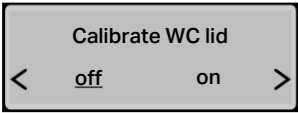

- Use the up/down arrow keys to access the next menu item.



- i** To save the modified settings, the menu must be run through in its entirety until the main menu appears once again on the display.

Shown on display	Note
Next descaling in ddd days	Display in days until the next descaling
Descaling device now? < no yes >	[yes] = Start descaling. → see "Descaling the device", page 32 [no] = Continue with the [Show device info] menu
Fill in the descaling agent	

Shown on display	Note
<div style="border: 1px solid black; padding: 5px; text-align: center;"> <p>Start descaling?</p> <p>< no <u>yes</u> ></p> </div>	<p>The descaling procedure should not be cancelled after filling the descaling agent because it would otherwise be flushed away unused. The display shows [Device is flushing..].</p>
<div style="border: 1px solid black; padding: 5px; text-align: center;"> <p>Descaling time remaining xx minutes</p> </div>	<p>Status messages of the automatic descaling procedure</p>
<div style="border: 1px solid black; padding: 5px; text-align: center;"> <p>Show device information</p> <p>< <u>no</u> yes ></p> </div>	<p>[yes] = Display of the device information [no] = Continue with the [Error message] menu</p>
<div style="border: 1px solid black; padding: 5px; text-align: center;"> <p>Model AquaClean Mera Comfort</p> </div>	<p>Type/Equipment version</p>
<div style="border: 1px solid black; padding: 5px; text-align: center;"> <p>Article number 146.xxx.xxx.</p> </div>	<p>Geberit article number</p>
<div style="border: 1px solid black; padding: 5px; text-align: center;"> <p>Serial number HBxxxxxxxxx</p> </div>	<p>Device serial number (required in case of service)</p>
<div style="border: 1px solid black; padding: 5px; text-align: center;"> <p>Commissioning date dd.mm.yyyy</p> </div>	<p>Date the device was first switched on</p>
<div style="border: 1px solid black; padding: 5px; text-align: center;"> <p>Error message xxxxx</p> </div>	<p>An error code is only displayed in the event of an error. → see "Status LED on the lateral control panel", page 40</p>
<div style="border: 1px solid black; padding: 5px; text-align: center;"> <p>Demonstration mode</p> <p>< <u>off</u> on ></p> </div>	<p>[yes] = Switch on demonstration mode [no] = Continue with the [Calibrate WC lid] menu</p>
<div style="border: 1px solid black; padding: 5px; text-align: center;"> <p>Activate demo mode?</p> <p>< <u>no</u> yes ></p> </div>	<p>Safety query for activating demonstration mode</p>

Shown on display	Note
 <p>Calibrate WC lid < <u>off</u> on ></p>	<p>Safety query for setting the opening angle of the WC lid</p>
 <p>WC lid position < [progress bar] ></p>	<p>Opening angle of the WC lid</p>

Descaling the device

Information on descaling:

- You will need to descale the device at least once a year, or more often depending on the number of shower cycles.
- During the descaling procedure, you can continue to use the device without the shower toilet functions.
- The descaling procedure lasts up to 40 minutes. During this time, the LED lights up orange and you can see the descaling status on the display. Once the orange LED switches off, the spray functionality is once again ready for operation.

ATTENTION

Damage to the device from aggressive descaling agents

- ▶ Only use Geberit AquaClean descaling agent in the device.

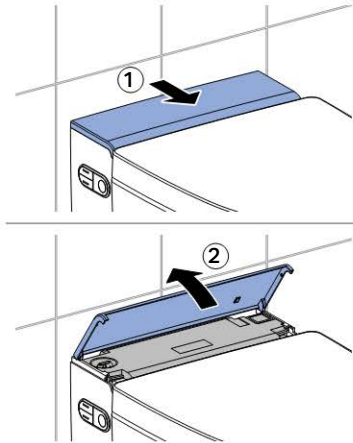


The descaling procedure should not be cancelled after filling the descaling agent because it would otherwise be flushed away unused. The display shows [Device is flushing...].

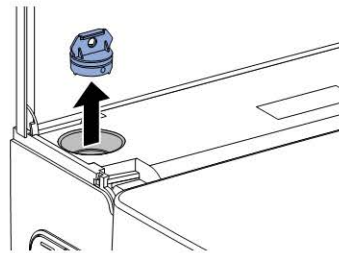
Prerequisite

- The LED on the control panel lights up red or flashes red.
- At the push of a button, the display shows [Descalce device now] on the rear side of the remote control.

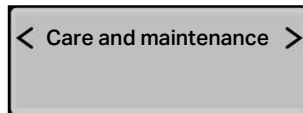
- 1 Open the design cover.



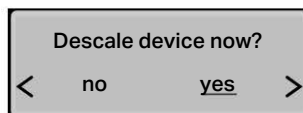
- 2 Remove the plug.



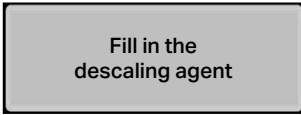
- 3 Launch the [Care and maintenance] main menu using the buttons on the rear side of the remote control.



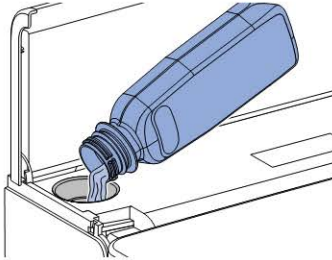
- 4 Use the <down> arrow key to select the [Descalce device now?] menu item.



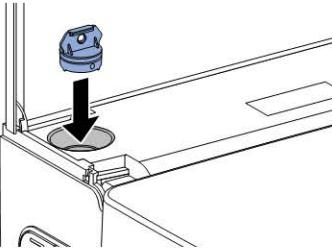
- 5** Use the arrow keys to select <yes>.
✓ Appears on the display



- 6** Pour a bottle (125 ml) Geberit AquaClean of descaling agent into the filling opening.

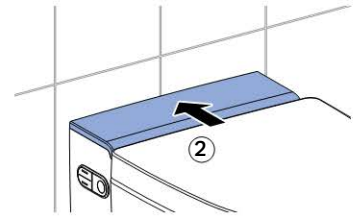
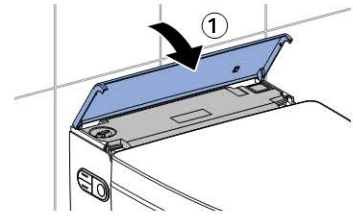


- 7** Re-insert the plug.

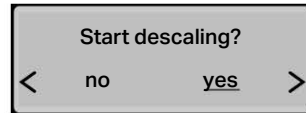


- 8** Remove splashes of descaling agent immediately with a damp towel.

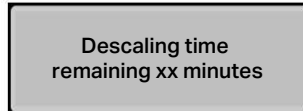
- 9** Close the design cover.



- 10** Use the arrow key to start the descaling procedure.



- ✓ A status message appears on the display which shows the duration of the descaling procedure.



- ✓ The LED on the control panel lights up orange until the descaling procedure is complete.

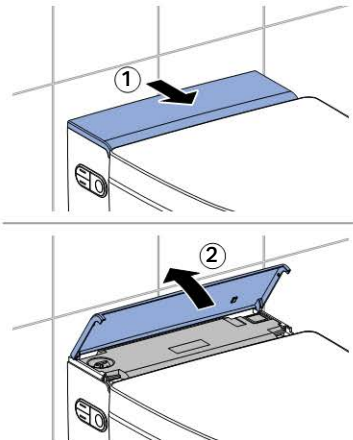
Cleaning the flushing area of the WC ceramic appliance

- 1 Spray the WC ceramic appliance with Geberit AquaClean cleaning agent and allow the cleaning agent a few minutes to take effect.
- 2 Finally, rinse the WC ceramic appliance with water.
- 3 Remove stubborn stains with a toilet brush.

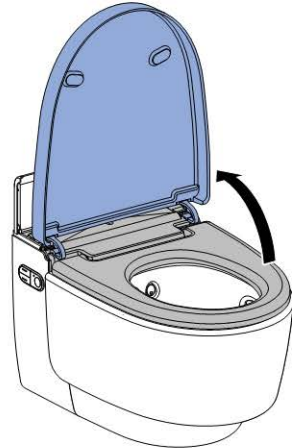
Cleaning the WC lid and housing

- i** Be careful not to scratch the surface of the WC seat. Always place the components on a soft, non-scratching underlay.

- 1 Open the design cover.

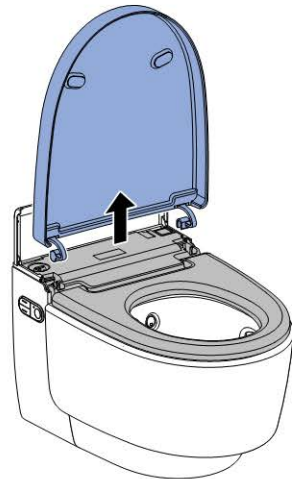


- 2 Gently lift the WC lid to activate the lid lifter.



- ✓ The WC lid lifts slowly and stops in the vertical position.

- 3 Lift the WC lid vertically out of its position.



- 4 Spray the surfaces with Geberit AquaClean cleaning agent.
- 5 Wipe the surfaces with a soft, lint-free, damp cloth.

6 Then dry the surfaces with a soft, lint-free cloth.

7 After cleaning is complete, re-assemble the device in reverse order of disassembly.

The WC lid cannot be inserted

The closing mechanism of the lid lifter was activated, although the WC lid was not installed.

1 Press the <Shower> button on the remote control to reset the hinge position.

2 Insert the WC lid vertically.

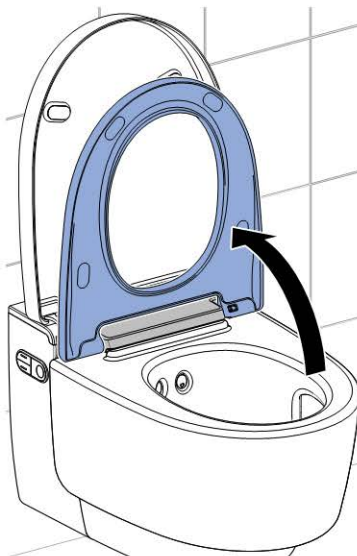
3 Press the <Shower> button once again on the remote control to close the WC lid.

Cleaning the WC seat

The WC seat and lid can be removed easily for simple cleaning.

i Be careful not to scratch the surface of the WC seat. Always place the components on a soft, non-scratching underlay.

1 Place the WC seat in the vertical position.



2 Slide the release button to the right and lift the WC seat out of the right-hand bracket.



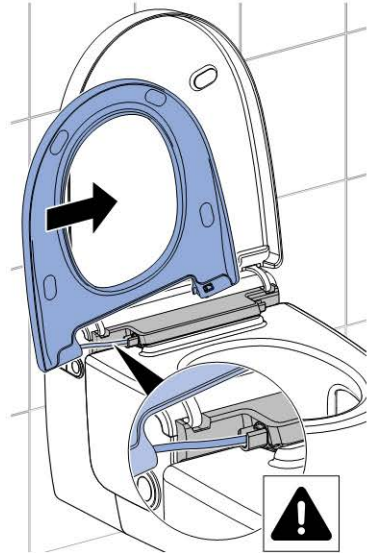
- 3** Slide the WC seat out of the left-hand hinge. During dismantling and cleaning, take care to ensure that the cable does not become kinked or damaged.



✓ The WC seat is removed and can be cleaned.

- 4** Spray the surfaces with Geberit AquaClean cleaning agent.
- 5** Wipe the surfaces with a soft, lint-free, damp cloth.
- 6** Then dry the surfaces with a soft, lint-free cloth.

- 7** After cleaning is complete, re-assemble the device in reverse order of disassembly. Take care to ensure that the cable is guided back correctly into the WC seat and that it does not become kinked or damaged during this process.

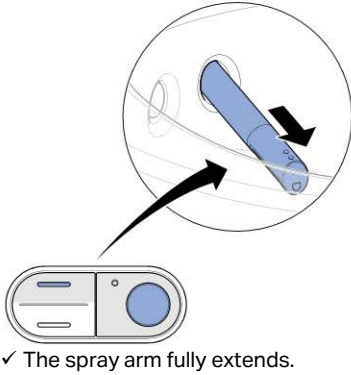


Cleaning the dryer arm and spray nozzle

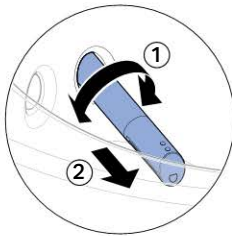
- i** For cleaning, use a soft, lint-free cloth.
- Geberit AquaClean cleaning agent is particularly suitable for all surfaces of the device.

- 1** Enter the detection range of the device.
✓ The WC lid lifts up.
- 2** Lift the WC seat.

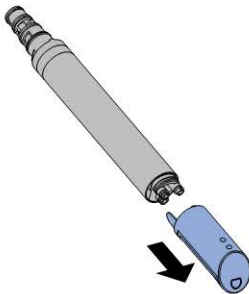
- 3** Press the <up> button and the <Shower> button at the same time.



- 4** Twist the spray arm in any direction and remove it.



- 5** Pull out the spray nozzle for cleaning and descaling.

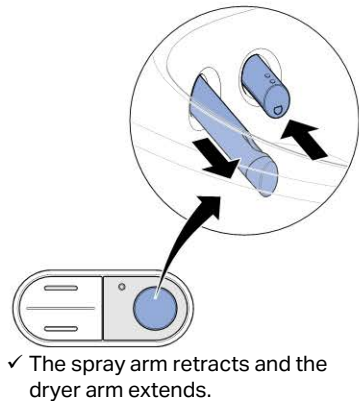


- 6** Replace the spray nozzle if it can no longer be completely cleaned and descaled.

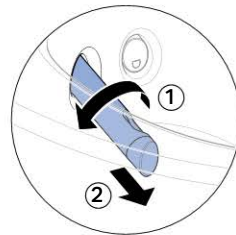
- 7** Spray the spray arm with Geberit AquaClean cleaning agent. Then rinse the spray arm with water.

- 8** Dry both parts carefully before re-assembling and re-fitting the spray arm.

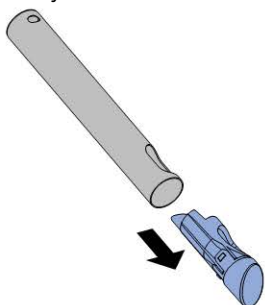
- 9** Press the <Shower> button to extend the dryer arm.



- 10** Unlock the dryer arm by turning it 90° to the left. Pull the dryer arm out.



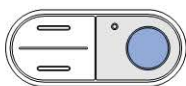
- 11** Press the unlocking button on the rear side of the dryer arm and pull out the dryer nozzle.



- 12** Clean the dryer arm and dryer nozzle. Dry both parts carefully before re-assembling the dryer arm.

- 13** Replace the dryer nozzle if it can no longer be completely cleaned.

- 14** Press the <Shower> button on the lateral control panel.



- ✓ The dryer arm retracts completely.

Result

- ✓ The cleaning procedure is now complete.

Replacing the ceramic honeycomb filter

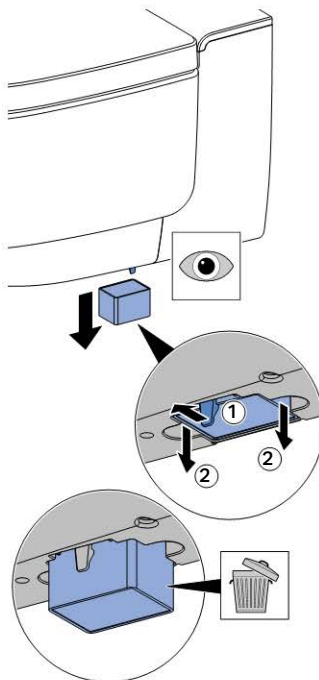
- i** Under average odour extraction usage conditions, the ceramic honeycomb filter has a service life of approx. 5 years.

- i** The ceramic honeycomb filter is located on the bottom right side of the device. It is fastened with a catch spring.

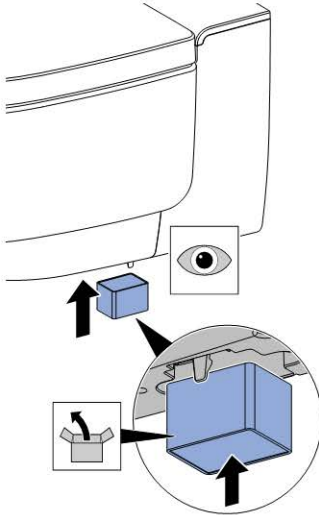
Prerequisite

- Odour neutralisation is weak or ineffective.

- 1** Bend the catch spring gently to the side to unfasten the ceramic honeycomb filter. At the same time, remove the used filter from the bracket.



2 Insert the new filter.



- ✓ The catch spring is used to fasten the new filter.

Result

- ✓ Odour neutralisation will now function again.

Troubleshooting

Status LED on the lateral control panel

The LED on the lateral control panel informs you of the current device status. The current condition of the device is therefore visible.

LED	Description
Does not light up	Heating element is switched off/economy mode is active.
Lights up blue	The heating element is switched on.
Flashes blue	The device initialises after switching on.
Lights up red	The device must be descaled. → see "Descaling the device", page 32
Flashes red	A malfunction message is pending. <ul style="list-style-type: none">▶ If [Error message] is displayed on the remote control: Contact customer service.▶ If [Descal device now?] is displayed on the remote control: → see "Descaling the device", page 32
Lights up orange	The device is now descaling. It is not possible to use the shower toilet for the duration of the descaling procedure.
Flashes orange	Water replacement is being carried out. → see "Automatic water replacement", page 26

Device descaling message

During installation, the device was configured for the local water hardness in accordance with the following table. This adaptation prevents unnecessary descaling procedures and helps protect the environment. Nevertheless, regular descaling of the device is required.

Range	°fH	°dH	°eH
soft	≤ 15	≤ 8	≤ 11
medium	15–25	8–14	11–18
hard	> 25	> 14	> 18



The device can continue to be used normally if the prompt on the display to descale the device is rejected with [no]. Descaling should be carried out soon.

Frequency	Message	Fault clearance
At least once a year	<ul style="list-style-type: none"> • The LED on the control panel lights up red. • The display shows [Descalce device now?]. 	<ul style="list-style-type: none"> ▶ Select [yes] on the display and perform a descaling procedure.
Maximum number of shower cycles depending on the water hardness reached		
Double the maximum number of shower cycles depending on the water hardness reached	<ul style="list-style-type: none"> • The LED on the control panel flashes red. • The display shows [Descalce device now?]. 	<p>Prerequisite</p> <ul style="list-style-type: none"> – A shower procedure is no longer possible without descaling. ▶ Select [yes] on the display and perform a descaling procedure.

The shower toilet is not functioning

The following table will help you with troubleshooting if the shower toilet is without function.



DANGER

Danger of fatal electric shock

- ▶ Do not open the device
- ▶ Do not attempt to repair the device yourself
- ▶ Do not modify the device
- ▶ Do not replace damaged mains connection cables yourself



The shower toilet can be used as a normal toilet even in the event of a malfunction. The spray arm and dryer arm must be fully retracted. You start the toilet flush as usual by pressing the buttons on the cistern.




If the device should be defective, then it can be switched off using the power switch.


Step	Description of problem	Fault clearance
1	The shower toilet and the status LED on the control panel are without function.	<ul style="list-style-type: none"> ▶ Connect the mains plug (if available). ▶ Set power switch to "ON" position. <p>Result</p> <ul style="list-style-type: none"> ✓ The device re-initialises.
2	Fuse or residual current protective device in the electrical distributor trips once.	<ul style="list-style-type: none"> ▶ Replace or reset the fuse in the electrical distributor. ▶ Reset the residual current protective device in the electrical distributor. <p>Result</p> <ul style="list-style-type: none"> ✓ The device initialises again after switching on. Using the device does not trip any fuses or residual current protective devices.

Step	Description of problem	Fault clearance
3	The fuse or residual current protective device in the electrical distributor trips repeatedly when the device is used.	<ul style="list-style-type: none"> ▶ Replace or reset the fuse or residual current protective device in the electrical distributor. ▶ Disconnect the mains plug (if available). ▶ Contact customer service. <p>Result ✓ The device is defective.</p>
4	The product has an unknown technical defect.	<ul style="list-style-type: none"> ▶ Trip the fuse or residual current protective device in the electrical distributor. ▶ Disconnect the mains plug (if available). ▶ Contact customer service. ▶ Have the power supply tested by a skilled person.

Other functional errors

The following table will help you with troubleshooting if individual functions of the shower toilet have failed.

 The shower toilet can be used as a normal toilet even in the event of a malfunction. The spray arm and dryer arm must be fully retracted. You start the toilet flush as usual by pressing the buttons on the cistern.

 If the device should be defective, then it can be switched off using the power switch.

Step	Description of problem	Fault clearance
1	The status LED flashes red.	<ul style="list-style-type: none"> ▶ Note the number of the error message on the display of the remote control and inform customer service.
2	The WC lid touches the wall.	<ul style="list-style-type: none"> ▶ Set the opening angle of the WC lid so that it does not touch the wall. → see "Care and maintenance main menu", page 29 <p>Result ✓ The device initialises again after switching on.</p>
3	The WC lid lifts slowly and remains in the vertical position.	<ul style="list-style-type: none"> ▶ Check the position of the design cover. ▶ Switch off the shower toilet at the power switch for 30 seconds.
4	Odour neutralisation is weak or ineffective.	<ul style="list-style-type: none"> ▶ Replace the ceramic honeycomb filter. → see "Replacing the ceramic honeycomb filter", page 38

Step	Description of problem	Fault clearance
5	The spray arm or dryer arm is not functioning correctly.	<ul style="list-style-type: none"> ▶ Switch off the shower toilet at the power switch for 30 seconds. <p>Result</p> <ul style="list-style-type: none"> ✓ The device initialises again after switching on.
6	The cleaning effect of the shower has weakened.	<ul style="list-style-type: none"> ▶ Clean or replace the spray nozzles. ▶ Descale the device.
7	When using the shower function, the shower toilet no longer reaches the usual temperature.	<ul style="list-style-type: none"> ▶ Descale the device. ▶ Switch off the shower toilet at the power switch for 30 seconds. <p>Result</p> <ul style="list-style-type: none"> ✓ The device initialises again after switching on.

The remote control is not functioning

The following table will help you with troubleshooting if:

- the remote control is without function.
- the remote control is unable to control the shower toilet.



Should the remote control fail to function, you can use the lateral control panel instead.



If the device should be defective, then it can be switched off using the power switch.

Step	Description of problem	Fault clearance
1	The remote control display still remains unresponsive when buttons are pushed.	<ul style="list-style-type: none"> ▶ Replace battery (type CR2032).
2	The battery was replaced. The remote control display still remains unresponsive when buttons are pushed.	<ul style="list-style-type: none"> ▶ Contact customer service. <p>Result</p> <ul style="list-style-type: none"> ✓ Remote control is defective.
3	The remote control is unable to control the shower toilet. The battery is not depleted.	<ul style="list-style-type: none"> ▶ Replace or reset the fuse or residual current protective device in the electrical distributor. ▶ Switch off the shower toilet at the power switch for 30 seconds. <p>Result</p> <ul style="list-style-type: none"> ✓ The device initialises again after switching on. Using the device does not trip any fuses or residual current protective devices.

Step	Description of problem	Fault clearance
4	After replacing the battery, the message [Pairing ok] does not appear on the display. The remote control is unable to control the shower toilet.	<ul style="list-style-type: none">▶ Re-assign remote control. → see "Re-assigning the remote control", page 45 <p>Result</p> <ul style="list-style-type: none">✓ The display shows [Pairing ok].

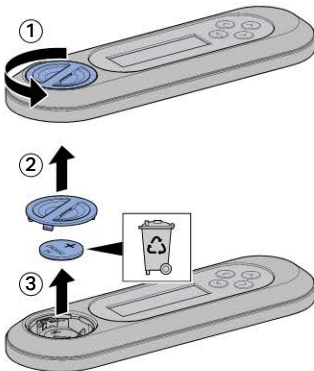
Replacing the remote control battery

Prerequisite

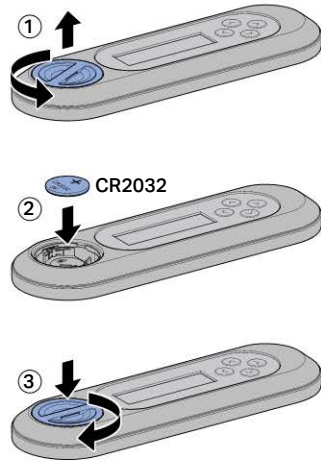
- During the entire procedure, the remote control must be located in the reception range of the shower toilet.



- 1** Remove the used battery. Dispose of the used battery appropriately.



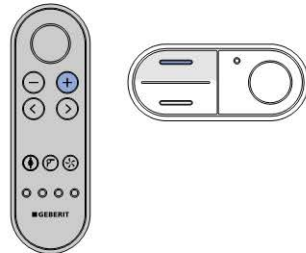
- 2** Insert a new CR2032 battery.



Re-assigning the remote control

- i** The device can only be operated with a single, assigned remote control.

- ▶ Press the <+> button on the remote control and the <up> button on the lateral control panel for approx. 30 seconds until [Pairing ok] appears on the display.



Result

- ✓ The shower toilet can be controlled by remote control.

Sustainability

Geberit Group and sustainability

As the European market leader in the sanitary industry, Geberit stands for water saving, resource efficiency and sustainable building. The Group has proven for decades that long-term business success is compatible with environmentally friendly actions and social policies. A company management geared to sustainability helps to save costs while minimizing risks at the same time. Geberit aims to act as a role model and set standards for its customers, suppliers and other partners. This means creating water-saving and sustainable products, using safe, environmentally friendly and resource-efficient production practices, engaging in purchasing and logistics activities with high environmental and ethical standards, and offering excellent working conditions for more than 12 000 dedicated and highly qualified employees worldwide. One way in which the company is showing its awareness of social responsibility is by participating in water relief projects around the world.

Ecodesign – ecobalance

The basis for sustainable products is formed by a systematic innovation process in which product materials and functional principles are chosen that are as environmentally friendly as possible, risks are minimised and a high degree of resource efficiency is strived for. We can supply a detailed ecobalance for this product upon request.

Tips for reducing the ecological footprint


This product was developed with the utmost care, also with regard to the consumption of energy, water and resources (see also technical data). You can reduce the ecological footprint of the product by:

- Switch off the device when you go on holiday.
- Manually interrupt the spray functionality and thus saving hot water.
- Use as little paper as possible for drying.
- Switch off the heating function of the storage water heater.
- Use environmentally friendly cleaning agents.
- Service the device regularly and handling it with care.
- Returning the device to Geberit or a designated partner for appropriate disposal.

Disposal

Disposal of old electrical and electronic equipment





In accordance with Directive 2012/19/EU (WEEE-II) manufacturers of electrical equipment are obliged to take back old equipment and to dispose of it appropriately. The symbol indicates that the product cannot be disposed of with non-recyclable waste. Old equipment should be returned directly to Geberit, where it will be disposed of appropriately. Addresses to which equipment can be returned can be requested from the relevant Geberit sales company.

Constituents

This product conforms to the requirements of Directive 2011/06/EU (Directive on the Restriction of the Use of Certain Hazardous Substances in Electrical and Electronic Equipment) and is free of environmental pollutants such as lead, mercury, cadmium and chrome VI.

The European chemical regulation 1907/2006/EC, which regulates the registration, assessment, approval and restriction of certain chemical substances, is also complied with.

End user warranty

End user warranty

The following end user warranty is provided in addition to and does not affect your contractual partner's liability for defective products.

The Geberit company ("Geberit") responsible for the place of installation of the Geberit AquaClean product ("product") shall provide the end user with a warranty for the product identified by the serial number on the warranty card. The scope of this warranty is as follows:

1. Geberit guarantees that the product shall be free from material defects and manufacturing faults for a period of 3 years ("warranty period") calculated from the date of installation at the end user's premises. Warranty scope:
 - a) Within the first 2 years of the warranty period, Geberit shall have a customer service representative authorised by Geberit rectify any material defects or manufacturing faults free of charge by repairing or replacing the defective parts.
 - b) In the third year of the warranty period, Geberit shall supply replacements for defective parts free of charge to the customer service representative authorised by Geberit and contracted by the end user to repair the product.
2. The end user shall not be entitled to assert more extensive claims against Geberit on the basis of this warranty.
3. Claims can only be made under the warranty if:
 - a) The product has been installed and put into operation by an installation company or by customer service personnel authorised by Geberit.
 - b) No modifications have been made to the product; in particular, no parts have been removed, replaced or added.
 - c) The product defect has not been caused by improper installation or use, nor can it be attributed to inadequate care or maintenance.
 - d) Claims shall have validity during the third year of the warranty period only if the end user has completed the enclosed warranty card in full and returned it to the Geberit company responsible for the place of installation within 90 working days of the installation date.
4. This warranty applies solely to places of installation in countries in which Geberit has its own sales company or is represented by a sales partner.
5. The warranty is exclusively subject to the substantive law of the country in which Geberit has its place of business. The United Nations Convention on Contracts for the International Sale of Goods is expressly excluded. The exclusive place of jurisdiction for all disputes arising from or in connection with this warranty is the location of Geberit's headquarters.



→ www.geberit-aquaclean.com/registration

Technical data and conformity

Technical data

Nominal voltage	230 V AC
Mains frequency	50 Hz
Power consumption	2000 W
Power consumption standby	≤ 0.5 W
Protection degree	IPX4
Protection class	I
Mains connection	Mains connection via system plug with flexible three-wire sheathed cable
Spray time	30-50 s
Number of shower pressure settings, shower spray	5
Water temperature	34-40 °C
Operating temperature	5-40 °C
Flow pressure	50-1000 kPa 0.5-10 bar
Minimum flow pressure	50 kPa 0.5 bar
Calculated flow rate	0.03 l/s
Maximum load, WC seat	150 kg

Declaration of conformity

You can obtain a copy of the declaration of conformity from your responsible Geberit sales company.

(CH) Geberit Vertriebs AG
Schachenstrasse 77
CH-8645 Jona
T 0848 882 982
→ www.geberit-aquaclean.ch

(DE) Geberit Vertriebs GmbH
Kundendienst / Servicestelle
Theuerbachstrasse 1
D-88630 Pfllendorf
T (075 52) 934 10 11
F (075 52) 934 866
→ www.geberit-aquaclean.de

(AT) Geberit Vertriebs GmbH & Co. KG
Geberit AquaClean Schauraum
Argentinier Strasse 29
A-1040 Wien
T (01) 577 11 77
F (01) 577 11 77 - 21
→ www.geberit-aquaclean.at

(BE) Geberit nv
Beaulieustraat 6
B-1830 Machelen
T +32 2 252 0111
F +32 2 251 0867
→ www.geberit-aquaclean.be

(BG) Юнитрейд Интернешънъл ЕООД
бул. "Черни връх" 161-А
1407 София
T 02/ 968 11 11
F 02/ 968 10 01
→ www.unitrade-bg.com

(CZ) Geberit spol. s r.o.
Sokolovská 2408/222
190 00 Praha 9
T +420 547 212 335
F +420 547 212 340
→ www.geberit.cz

(DK) Geberit A/S
Lægårdsvej 26
DK-8520 Lystrup
T +45 86 74 10 86
F +45 86 74 10 98
→ www.geberit-aquaclean.dk

(ES) Geberit, S.A.
La Selva, 10 1° A; Ed. In Blau
Parque de Negocios Mas Blau
E-08820-El Prat de Llobregat
(Barcelona)
T +34 902 170 635
→ www.geberit-aquaclean.es

(FI) Geberit Oy
Ruukinkuja 4
FI - 02330 ESPOO
P +358 9 867 8450
→ www.geberit.fi

(FR) Geberit France
Parc Tertiaire Silic
23/25 rue de Villeneuve - BP 20432
94583 Rungis cedex
T +33(0)825 801 603
F +33(0)825 801 604
→ www.geberit-aquaclean.fr

(GB) Geberit Sales Ltd.
Geberit House
Academy Drive
Warwick
Warwickshire
CV34 6QZ
T (0)1926 516 800
T (0)1926 516 809
In Eire T +44 1622 717 811
→ www.geberit-aquaclean.co.uk

(HR) Predstavništvo Geberit
prodaja d.o.o.
Kutnjački put 11
10110 Zagreb, HR
T +385 1 3867 800
F +385 1 3867 801
→ www.geberit.hr

(HU) Geberit Kft
1117 Budapest,
Budafoki út 97.
T +36 1 204 4187
→ www.geberit.hu

(IT) Geberit Marke ing e Distribuzione SA
Via Gerre 4
CH-6928 Manno
T +41 91 611 92 92
F +41 91 611 93 93
→ www.geberit-aquaclean.it

(LU) Geberit Luxembourg
61, avenue de la Libération
L-3850 Schifflange
T +352 54 52 26
F +352 54 54 91
→ www.geberit.lu

(NL) Geberit B.V.
Fultonbaan 15
3439 NE Nieuwegein
T +31 (0)3060 57700
F +31 (0)3060 53392
→ www.geberit-aquaclean.nl

(NO) Geberit AS
Luhrtoppen 2
N-1470 Lørenskog
T +47 67 97 82 00
→ www.geberit-aquaclean.no

(PL) Geberit Sp. z o.o.
ul. Postępu 1
02-676 Warszawa
T +48 22 843 06 96
→ www.geberit-aquaclean.pl

(PT) Geberit Tecnologia Sanitária, S.A
Urb. Polo Tecnológico à
Estr. do Paço do Lumiar, Lt. 6-2º A
1600-542 LISBOA
→ www.geberit.pt

(RO) Geberit International Sales AG
Splaiul Unirii, Nr. 86, Et. 3
Sector 4, Bucharest
T +40 21 330 30 80/81
F +40 21 330 31 61
→ www.geberit.ro

(RS) Geberit - Predstavništvo za
Republiku Srbiju i Republiku Crnu Goru
Vojvode Skopljanca 24
SR - 11000 Beograd
T +381 11 30 96 430
F +381 11 30 96 431
→ www.geberit.rs

(RU) ООО „ГЕБЕРИТ РУС“
Олимпийский пр., 16, стр.5, 5 этаж
129110 Москва
тел.: +7 495 783 83 30
→ www.geberit.ru

(SE) Geberit AB
Kantyxegatan 25
Box 50 414
SE-213 76 Malmö
T +46 40 680 89 30
→ www.geberit.se

(SI) Geberit prodaja, d.o.o.
Smolnik 17
2342 Ruše
T 01 586 22 00
F 01 586 22 19
→ www.geberit.si

(SK) Geberit Slovensko s.r.o.
Karadžičova 10
821 08 Bratislava 2
T +421 2 49 20 30 71
→ www.geberit.sk

(TR) Geberit Tesisat Sistemleri Tic Ltd. ti.
Köprüyolu Cad. No: 33
34718 Kadıköy- İstanbul Turkey
T +90 216 340 82 73
F +90 216 340 82 79
→ www.geberit.com.tr

(ZA) Geberit Southern Africa (Pty.) Ltd.
17-15 Street, Eastgate Gardens
Commercial Park
Sandton, South Africa
T +27 11 444 5070
F +27 11 444 5992
→ www.geberit.co.za

(AE) Geberit International Sales AG
Dubai Branch
P.O. Box 54715,
Dubai Airport Free Zone
East Wing, Bldg- 4A, 4th Floor, 401,
Dubai - UAE
T +971 4 204 5477
F +971 4 204 5497
→ www.geberit.ae

(CN) 吉博力(上海)贸易有限公司
地址: 上海市嘉定区南翔高科技
园区惠平路1515号
邮编: 201802